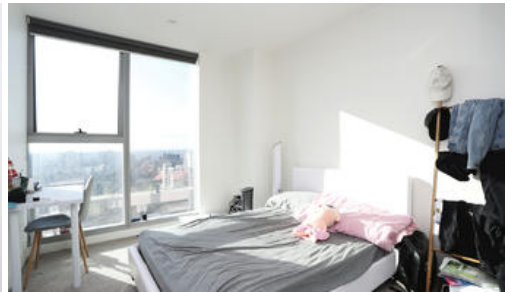




Unit 2502, 36 La Trobe St, Melbourne



NEARBY CARLTON GARDENS & QV - RENTAL YIELD AT 6.5%!

Positioned on the north-east side of Melbourne CBD, this contemporary apartment is only minutes from Carlton Gardens, QV shopping precinct, State Library, and a short stroll to Chinatown, RMIT, and Melbourne Central.

Featuring:

- Spacious main bedroom with BIR and ensuite
- Two additional bedrooms (one with BIRs)
- Central bathroom with shower & vanity
- Separate hide-away laundry facilities
- Stylish kitchen with stainless steel gas cooktop, oven & integrated dishwasher
- Floorboards to kitchen & dining areas
- Tranquil views of Carlton Gardens
- Private balcony
- Security intercom and elevator access

Building amenities include communal roof terrace with outdoor BBQ.

Currently leased at \$750 per week fixed until February 2019.

The above information provided has been furnished to us by the vendor/s. We have not verified whether or not that information is accurate and do not have any belief in one way or the other in its accuracy. We do not accept any responsibility to any person for its accuracy and do no more than pass it on. All interested parties should make and rely upon their own inquiries in order to determine whether or not this information is in fact accurate.

3 2

Price	\$585,000
Property Type	residential
Property ID	737

AGENT DETAILS

Angela Wu - 0422 318 680

OFFICE DETAILS

Carlton
3 Bouverie Street Carlton VIC 3053
Australia
03 9663 6868

